

# OBSERVATION PROTOCOLE



## REMINDER ON CALCULATING THE SPAWNING DAY OF *PORITES RUS*

*In the morning of the 5th day after the full moon*

**1:30 hour**  
after sunrise  
for massive/  
branching  
colonies.



OU



**5:00** after  
sunrise for  
plates colonies.

*The prediction is accurate to within 30 minutes*

## DURING THE OBSERVATION



**Enter the water** at least 15 minutes before the predicted time and monitor several colonies simultaneously.



When you see the first colony release a faint white veil, **note the exact time**. The phenomenon will intensify, and other colonies will begin to release their spawn as well.



Check for **the spawning of female colonies**, which usually begins around 20 minutes after the initial male spawning.

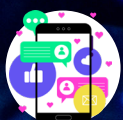
## AFTER THE OBSERVATION



Log in to or download the mobile application **TAMA NO TE TAIROTO**.



Record a new spawning observation of *Porites rus*, indicate the site, date, time, depth, weather, and the number of people present with you.



Share your photos and videos on social media using the hashtags :  
**#connectedbythereef** and **#tamanotetairoto**